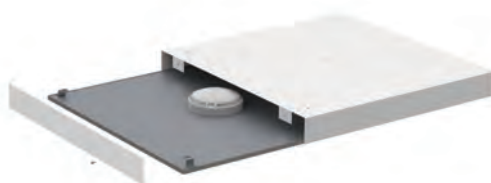


Endurance LED TPa UGR<19 Recessed Panel

Supplied c/w Remote Driver



Surface Mounting Frame for
LED Panel
(shown with Panel Pod
Emergency installed)



- High performance maintenance free LED panel
- TPa as standard
- UGR<19 (unified glare rating) compliant luminaire assisting to eliminate glare for visual comfort
- panel outperforms 3x14W T5
- Cool white, warm white and daylight options
- White anodised aluminium frame for visual compatibility with ceiling grid
- Low glare and even light distribution for multiple applications
- Panel Pod Self-Test emergency option
- Panel Pod sensor option
- Surface mounting frame option
- Powered by Philips
- LED lifespan L90 52,000 hours

AERMLED3/60 Dimensions (mm)
L595 x W595 x H10

See p430 for more information
on Panel Pod Emergency and
Panel Pod Sensor

Code	Lamp	Description
AERMLED3/60/CW	LED	29W - Cool White
AERMLED3/60/WW	LED	29W - Warm White
AERMLED3/60/DL	LED	29W - Daylight

High Output	AERMLED3/HO/60/CW	LED	29W - Cool White
	AERMLED3/HO/60/WW	LED	29W - Warm White
	AERMLED3/HO/60/DL	LED	29W - Daylight

Emergency	AIRMLED/POD/3NM/ST	LED	5W - Panel Pod Self-Test Emergency
Sensor	AIRMLED/POD/MWS		1W - Microwave Sensor

Options	/OCTO	OCTO Smart Control
	/DD	Digital Dimming (DD1/DD3)*

* DD2/DD4 available with alternative control gear

Accessories	AIRMLED/SMF	Surface Mounting Frame (L600mm x W600mm x D75mm)
	AIRMLED/PRK	Plasterboard Recessing Kit (Cut-out 615x615mm)
	AERMLED/SK	2 Metre Suspension Kit
	AEQTCC/600	Equaliser 600x600 Temperature Regulator

LED Information

Total (Watts)	29W	HO
Lumens Delivered		
Cool White	2953lm	3742lm
Warm White	2873lm	3610lm
Daylight	2938lm	3725lm
Lm/W Cool White	102lm	129lm
Lm/W Warm White	99lm	125lm
Lm/W Daylight	101lm	128lm
CRI	Ra 80	
CCT Cool White	4000K	
CCT Warm White	3000K	
CCT Daylight	6000K	
Input	230V	
Hertz	50Hz	
Operating Temp	-20°C to 40°C	



- * Subject to ceiling/installation types
- * Not applicable to surface/suspended applications